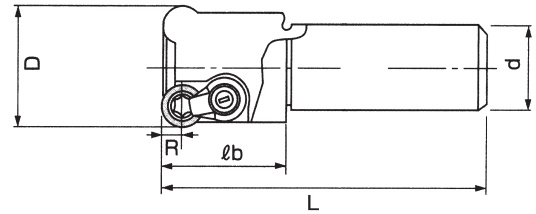
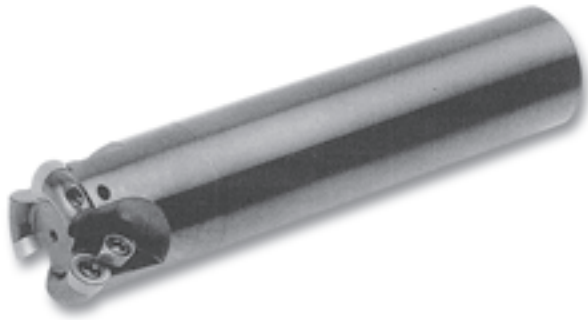






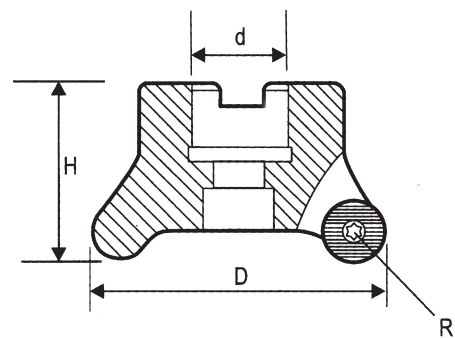
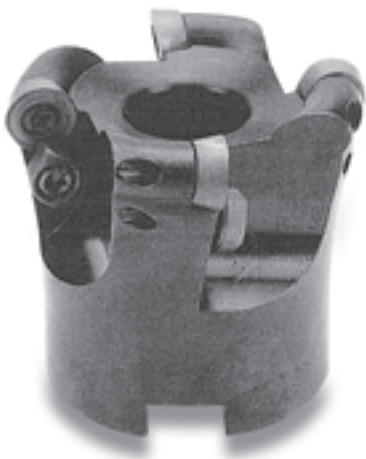
Round Insert End Mills





ORDER NO.	BLADE	D	L	d	lb	R	INSERT	CLAMP			CODE NO.
C20-4R20-150	2	20	150	20	50	4	RDMT0802	-	SCR-CRS3	T8	6002-001
C25-5R25-150	2	25	150	25	60	5	RDMT10T3	CL-5R	SCR-CRS4	T15	6002-002
C25-5R25-200	2	25	200	25	120	5	RDMT10T3	CL-5R	SCR-CRS4	T15	6002-003
C25-5R30-150	2	30	150	25	50	5	RDMT10T3	CL-5R	SCR-CRS4	T15	6002-004
C25-5R30-200	2	30	200	25	50	5	RDMT10T3	CL-5R	SCR-CRS4	T15	6002-005
C32-5R32-150	3	32	150	32	70	5	RDMT10T3	CL-5R	SCR-CRS4	T15	6002-006
C32-5R32-200	3	32	200	32	120	5	RDMT10T3	CL-5R	SCR-CRS4	T15	6002-007
C32-5R35X150	3	35	150	32	50	5	RDMT10T3	CL-5R	SCR-CRS4	T15	6002-008
C32-5R35X200	3	35	200	32	50	5	RDMT10T3	CL-5R	SCR-CRS4	T15	6002-009
C32-5R40X150	3	40	150	32	50	5	RDMT10T3	CL-5R	SCR-CRS4	T15	6002-010
C32-5R40X200	3	40	300	32	50	5	RDMT10T3	CL-5R	SCR-CRS4	T15	6002-011



Round Insert Milling Cutter



ORDER NO.	D	d	d metrics	H	BLADE	R	INSERT		CLAMP		CODE NO.
RM-5R50	50	-	22	45	4	5	RDMT10T3	SCR-CRS4	CL-5R	T15	6001-130
RM-5R63	63	25.4	22	50	5	5	RDMT10T3	SCR-CRS4	CL-5R	T15	6001-131
RM-8R50	50	-	22	45	3	8	RDMT1604	SCR-CRS5	CL-8R	T20	6001-133
RM-8R63	63	25.4	22	50	3/4	8	RDMT1604	SCR-CRS5	CL-8R	T20	6001-134