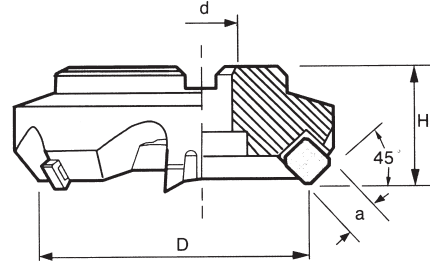




FACE Milling Cutter 45°

45°



ORDER NO.	D	dø		H	BLADE	WEIGHT(kg)		CODE NO.
		INCH	METRIC			INCH	METRIC	
SE545-3	80	25.4	27	50	5	2.1	2	6001-001
SE545-4	100	31.75	32	55	5	3.5	3.1	6001-002
SE545-5	125	38.1	40	60	6	5.1	5.3	6001-003
SE545-6	160	50.8	40	60	8	7.1	7	6001-004
SE545-8	200	47.625	60	60	10	10.4	9.5	6001-005
SE545-10	250	47.625	60	60	12	16.8		6001-006
SE545-12	300	47.625	60	60	14	27		6001-007

ORDER NO.	D	dø		H	BLADE	WEIGHT(kg)		CODE NO.
		INCH	METRIC			INCH	METRIC	
SE445-3	80	25.4	27	50	5	2.1	2	6001-020
SE445-4	100	31.75	32	55	5	3.2	3.1	6001-021
SE445-5	125	38.1	40	60	6	4.7	5.3	6001-022
SE445-6	160	50.8	40	60	8	7.3	7	6001-023
SE445-8	200	47.625	60	60	10	9.6	9.5	6001-024
SE445-10	250	47.625	60	60	12	16.7	17	6001-025
SE445-12	300	47.625	60	60	14	25.8		6001-026

PARTS

SCR-CL5/16	CL-S	SCR-ST-S4	ST-S	WRE-M4T

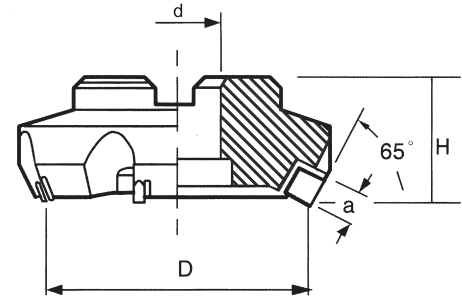
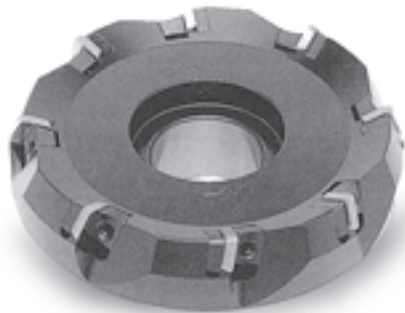
INSERT

445	545
SEKN-1203	SEKN-1504



FACE Milling Cutter 65°

65°



ORDER NO.	D	dø		H	BLADE	WEIGHT(kg)		CODE NO.
		INCH	METRIC			INCH	METRIC	
SP535-3	80	25.4	27	50	5	2.1	2.1	6001-040
SP535-4	100	31.75	32	55	5	3.3	3.3	6001-041
SP535-5	125	38.1	40	60	6	5.6	5.3	6001-042
SP535-6	160	50.8	40	60	8	7.4	7.2	6001-043
SP535-8	200	47.625	60	60	10	10.2	9.5	6001-044
SP535-10	250	47.625	60	60	12	17.5		6001-045
SP535-12	300	47.625	60	60	14			6001-046

ORDER NO.	D	dø		H	BLADE	WEIGHT(kg)		CODE NO.
		INCH	METRIC			INCH	METRIC	
SP435-3	80	25.4	27	50	5	2.1	2.3	6001-070
SP435-4	100	31.75	32	55	5	3.3	3.3	6001-071
SP435-5	125	38.1	40	60	6	5.5	5.4	6001-072
SP435-6	160	50.8	40	60	8	7.8	7.2	6001-073
SP435-8	200	47.625	60	60	10	10.1		6001-074
SP435-10	250	47.625	60	60	12	17.5		6001-075
SP435-12	300	47.625	60	60	14	26.8		6001-076

PARTS

SCR-CL5/16	CL-S	SCR-ST-S4	ST-S	WRN-M4T

INSERT

535	435
SPKN-1504	SPKN-1204