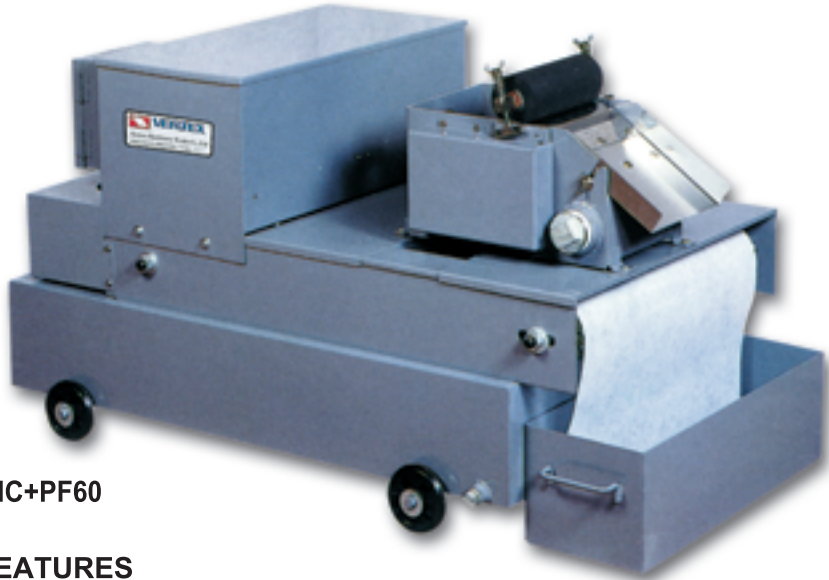




Magnetic Separator & Paper Filter



MC+PF60

APPLICABLE TO THE FOLLOWING WORKING MACHINES

- 1.Plang grinding machine.
 - 2.Fine-grinding machine.
 - 3.Honing machine.
 - 4.Deep-hole drill.
 - 5.Internal/exterless cylinder grinder.
 - 6.Centerless grinder.
- Please specify the power voltage other than 220V/3PH in your order list.
 - Specifications are subject to change without notice.

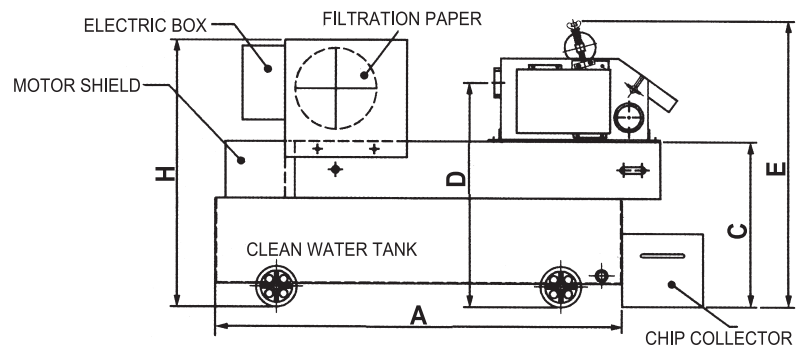
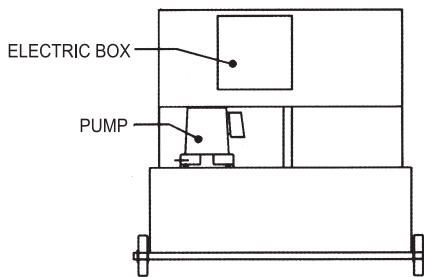
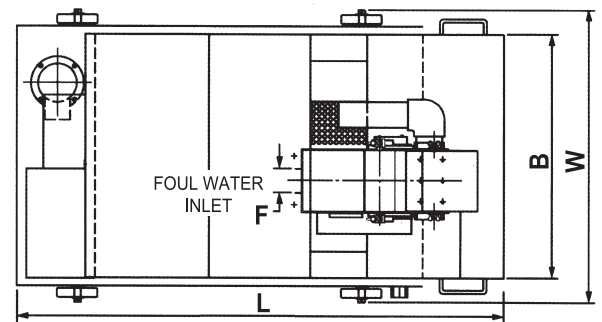
FEATURES

- 1.Applicable to both ferrous and non-ferrous metals.
- 2.Filtration effect depends on paper accuracy. Use 50 μ , 30 μ , or 15 μ .
- 3.Rough filtration for chip in coolant with magnet and then fine filtration for impurities with paper will save the paper and upgrade filtration accuracy.

DIMENSION DIAGRAM

Remarks

- 1.Standard accessory: one roll paper 50 μ



MAGNETIC SEPARATOR & PAPER FILTER SPECIFICATIONS

| ORDER NO. | DISPOSAL CAPACITY L/MIN | WATER TANK CAPACITY | L | A | B | C | D | E | F | H | W | PUMP | | PAPER MOTOR | PAPER | REMARKS | N.W. (kg) | G.W. (kg) | CODE NO. |
|-----------|-------------------------|---------------------|------|------|-----|-----|-----|-----|----------|-----|-----|------|--------|-------------|-------------------------------------|---------|-----------|-----------|----------|
| | | | | | | | | | | | | HP | OUTLET | | | | | | |
| MC+PF-20 | 20 | 100 | 1050 | 850 | 600 | 400 | 550 | 655 | PF1-1/2" | 610 | 720 | 1/8 | PF1/2" | 25W | W: 500MM L: 90M NO wheels | 115 | 140 | 2020-020 | |
| MC+PF-40 | 40 | 120 | 1200 | 1000 | 600 | 400 | 550 | 705 | PF2" | 660 | 720 | 1/8 | PF1/2" | 25W | | 150 | 175 | 2020-021 | |
| MC+PF-60 | 60 | 140 | 1350 | 1150 | 600 | 400 | 555 | 705 | PF2" | 660 | 720 | 1/8 | PF1/2" | 25W | | 165 | 200 | 2020-022 | |
| MC+PF-80 | 80 | 160 | 1500 | 1300 | 600 | 400 | 555 | 705 | PF2" | 660 | 720 | 1/4 | PF3/4" | 25W | | 190 | 225 | 2020-023 | |
| MC+PF-120 | 120 | 210 | 1500 | 1300 | 800 | 400 | 590 | 750 | PF2-1/2" | 740 | 920 | 1/2 | PF3/4" | 40W | W: 700MM L: 90M | 235 | 275 | 2020-024 | |
| MC+PF-160 | 160 | 260 | 1800 | 1600 | 800 | 400 | 605 | 750 | PF3" | 740 | 920 | 1/2 | PF3/4" | 40W | | 290 | 335 | 2020-025 | |