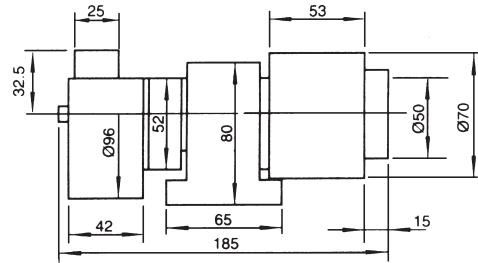




# Diamond Wheel Dresser



ORDER NO. V-TDD  
 CODE NO. 2012-090  
 WEIGHT : 4 kg

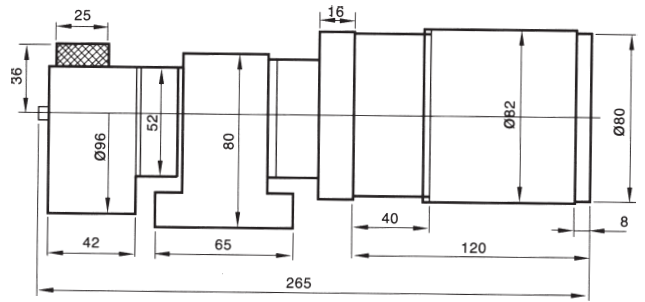
This device is suitably used for Diamond Grinding wheel. The surface is treated with blaze-dried lacquer. Axis part is fixed with shaft bearing and can be rotated in high speed & with great precision.



# Motor Type CBN Flat Wheel Dresser



N.W. 5.5Kg



SAND WHEEL SIZE:  $\phi$  75x25x12.7  $\phi$  WA80

Unit:mm

ORDER NO.	VOLTAGE	RPM	CODE NO.
V-TDM-1	110V	129	2012-100
V-TDM-2	220V	108	2012-101

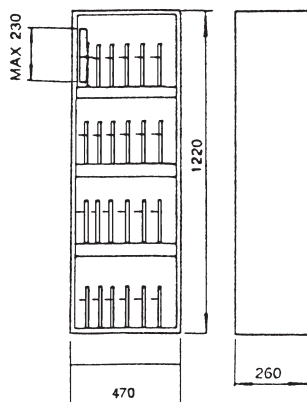
5.5KGS, SINGLE PHASE

0.07HP

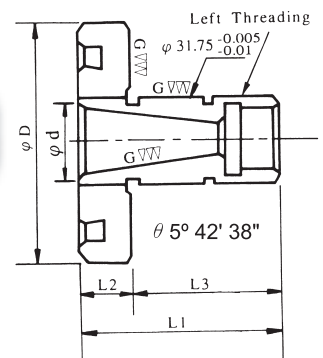


# Wheel Hanger

ORDER NO. VWH-24  
 CODE NO. 2013-001  
 WEIGHT : 24 kg



# Grinding Wheel Flange



Unit:mm

ORDER NO.	$\phi$ D	$\phi$ d	L1	L2	L3	Remarks	WEIGHT	CODE NO.
FKT-250	78	25.7+0 -0.05	40	13	27	KENT PROTH	1.2 kg	2013-010
FTA-350	75	25.4+0 -0.05	49	15	34	TA TUNG	1.2 kg	2013-011